



SECTIONAL GARAGE DOORS



HARMONY OF STYLE

and reliability of
design – distinctive
features of Alutech
Garage Doors

Warm, reliable and safe doors ensure comfort and convenience every day. Wide choice of designs and colours for Alutech Doors will help to emphasize individual style of modern architecture in hi-tech style or in a classic cottage. ALUTECH Doors can be installed in any garage. Alutech doors are all made to measure so will suit any style or shape of opening.

CONTENTS

9 reasons to buy an Alutech door

The range of ALUTECH/GUNTHER garage doors

Benefits of Trend Series doors

Doors made with S-ribbed panels

Doors made with M-ribbed panels

Doors made with L-ribbed panels

Georgian design doors

Doors made with microwave panels

Built in Wicket door

Side door with Sectional panels

Accessories

Reveal fit doors

Automation systems

7 main advantages of an Alutech Door

4

8

10

12

14

16

18

20

22

24

26

27

28

30



9 REASONS in favour of ALUTECH/GUNTHER doors





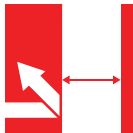
FLUSH MOUNTING FRAME LEGS



ALUTECH/GUNTHER Garage doors are good at keeping heat in. Thus providing a comfortable temperature and saving on heating costs in the winter. The thermal transmittance coefficient for ALUTECH /GUNTHER doors is:

- Trend Series (panel 40 mm) — **1.35 W/(m²K)***

Thermal insulation **U = 1.35 W/(m²K)** is comparable with a brick wall of **55 cm** thickness. Alutech sectional doors are supplied all over Europe, including some of the coldest regions possible.



DURABILITY AND RELIABLE PROTECTION



Panels with such a thickness are the basis of the doors' durability, robust construction and resistance to wind and impact loads.

The tests have showed that the ALUTECH/GUNTHER Trend Series doors withstand a wind load of **700 Pa**, that corresponds to wind speed of **120 km/h**.

40mm thick sandwich panels, provide the foundation for durability, robust construction, and resistance to impact and wind loads.



LONG OPERATIONAL LIFE



ALUTECH/GUNTHER sandwich panels have a closed loop design where steel sheets are interfixed into a «**lock**». This type of design prevents panels delaminating in the sun, or if the door meets a sudden obstruction. It therefore maximises the life span of the door, maintaining its smooth operation.

* based on tests conducted at the Rosenheim Institute



RESISTANCE TO CORROSION



Tests in independent laboratories proved that the Alutech door leaf can withstand the harshest environments, including the equivalent of 15 years of operation in coastal areas and heavily polluted industrial regions.

These unique anti-corrosion properties are possible due to:

- thickness of zinc coating (**16 micron**);
- double layer paint-and-lacquer coating (**PUR-PA**) **23-35 micron** thick.



RELIABLE SEALING



Alutech sectional door seals are manufactured by EDPM, a soft sealing rubber compound. The side and top seal have two leaves, forming an additional air chamber that substantially reduces heat loss.

Roller door brackets are designed to allow fine adjustment, between the door panel and garage structure, helps to eliminate gaps and any resulting heat loss.



SAFETY



Design of Alutech sectional doors provides protection against:

- Finger trapping
- Spring breakage device

Conformance to European standards EN 12604, EN 12453, EN 12424, EN 12425, EN 12426.



MAXIMUM SPRING ENDURANCE



Lifetime of ALUTECH/GUNTHER springs on Alutech sectional doors is up to **25 000 open/close cycles** which corresponds to approximately **17 years** of operation with 4 open/close cycles per day.

Springs capable of **25 000 open/close cycles** are offered as standard at no extra charge.



WIDE POSSIBILITIES with no extra charge



Alutech doors are made to measure to suit a clients individual requirement. Increments of 5mm in both the width and height are available no extra cost

A wide choice of panels and colours are available to suit any style. Alutech offer 5 panel types and 17 different standard colours.

For the individual look, Alutech offer a bespoke painting service to any RAL colour.



EFFICIENT, QUALITY, SERVICE AND MAINTENANCE



To compliment the quality product Alutech offer fast efficient and reliable service and maintenance support. All Alutech regional offices maintain a comprehensive stock of spare parts and components.



DOORS FOR ANY CONDITIONS





Trend

Trend Series doors are economical and functional doors of 40 mm thickness with fittings made of galvanized steel, which are optimally suited for regions with temperate and cold climates. They comply with European standards; in addition all the safety systems are available at no additional charge. The standard door package includes a spring with a maximum lifetime when compared to competitors – of up to 25,000 open/close cycles.

Trend Series doors are safe and practical doors at a reasonable price.

Characteristics

- The thickness of a sandwich panel is 40 mm
- The thermal transmittance coefficient is **1.35 W/(m²K)**
- Roller brackets and intermediate hinges are made of galvanised steel
- Can be installed as reveal fit between the brickwork or face fit behind the brickwork
- Curtain balancing with tension springs or torsion springs
- The maximum size of the garage doors is 6000 × 3000 mm

**Comparable to a brick wall
of 55 cm thickness**

Trend — AFFORDABLE, SAFE AND RELIABLE DOORS



WIDE OPPORTUNITIES OF INSTALLATION

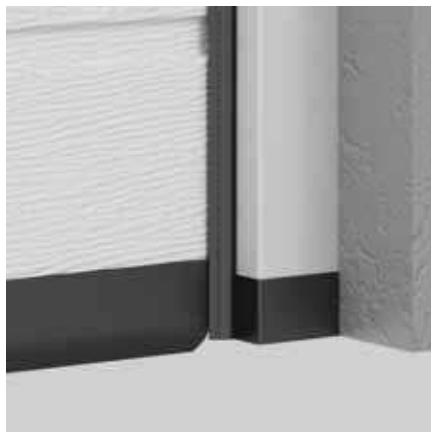


Colour matched side and head/top profile means that doors are able to be positioned slightly into the opening if desired.

These elements are manufactured from hot-dipped Galvanised steel, which is further coated with a protective lacquer coating (standard — white colour **RAL 9016**). At your request vertical leg profiles and front fascia strip can be painted in the colour of the door leaf so that it will add to the doors harmonious appearance.



PROTECTION AGAINST CORROSION



In heavy rainfall water can collect at the bottom of the doors. **The plastic base of the side profile** minimises the possibility of corrosion in high humidity environments, providing an attractive appearance of doors for a long time.



LONG-LASTING OPERATIONAL LIFE



SPRING
COVER

EXPOSED
SPRING

The side spring mechanism for doors up to 3.5m wide are fully enclosed for extra safety, it eliminates finger traps and enhances the doors internal appearance, by covering the mechanism.

Lifetime of springs is up to **25 000 open/close** cycles. This corresponds to **17 years** of service with 4 times daily opening/closing during the period.

Using advanced technology and years of experience in manufacturing has allowed us to create doors that have a number of advantages. Carefully thought-out design and high-quality components provide attractive design, reliable and safe operation of **Trend Series doors** for many years.



EFFECTIVE SAFETY



Torsion springs are equipped with **spring breaks** that stop the door leaf from falling in the case of spring breakage. This protection system is supplied at no extra cost and ensures safe operation.

ALUTECH/GUNTHER doors comply with European standard EN 13241-1, EN 12604, EN 12453, EN 12424, EN 12425, EN 12426.



PROTECTION AGAINST DRAUGHTS



Adjustable roller brackets, allow the top panel to seal directly to the top profile. This greatly reduces draughts and heat loss.

This adjustment will be set to its optimum during installation. It is also possible to make fine adjustment over the years to ensure your Alutech door will always be energy efficient.



SILENT MOVEMENT



Alutech are one of only a few manufacturers that include **ball race bearings within the rollers**. This allows for a much smoother operation, reducing the amount of noise of the door.

These bearings are of a closed type that are protected from dust and moisture, and do not require and lubrication.



A modern type of panel with horizontal ribs positioned at an even distance from each other. Due to symmetrical positioning of the horizontal ribs, junctions between panels are absolutely unnoticeable

SECTIONAL GARAGE DOORS MADE FROM **S-RIBBED** PANELS

Trend without wicket
Maximum door dimensions:
6000×3000 mm

Trend with wicket
Maximum door dimensions:
6000×3000 mm

External surface texture of a panel
Woodgrain or Smooth

Door leaf
 made from **S-ribbed** panels

14 standard colours are closest match to the RAL colour stated



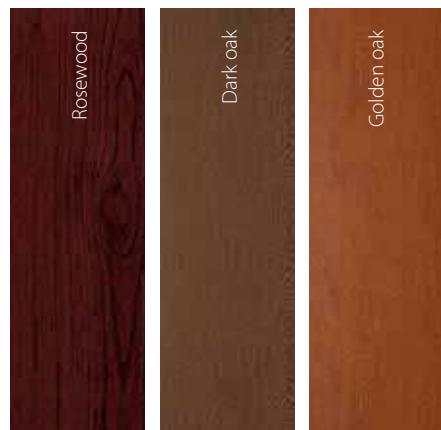
It is possible to finish doors in other **RAL colours**

S-RIBBED PANEL

Wood finish colours

External surface texture of a panel
Smooth

3 variants:



Woodgrain effect doors provide a realistic alternative to wood that will compliment your home. Its exclusive finish will look as good in the future as it will now.



Internal finish of the panel is
textured

Standard colour
 White-and -grey (close to **RAL 9002**)

It is possible to finish doors in
 other **RAL colours**



Garage doors made from **M-ribbed panels** are designed to compliment any home. With its flawless modern look it matches modern British architecture.

M-RIBBED PANELS

Medium

SECTIONAL GARAGE DOORS MADE FROM **M-RIBBED** PANELS

Trend without wicket
Maximum door dimensions:
6000 × 3000 mm

External surface texture of a panel
Woodgrain/Smooth

Door leaf made from
M-ribbed panels

14 standard colours are closest match to the RAL colour stated



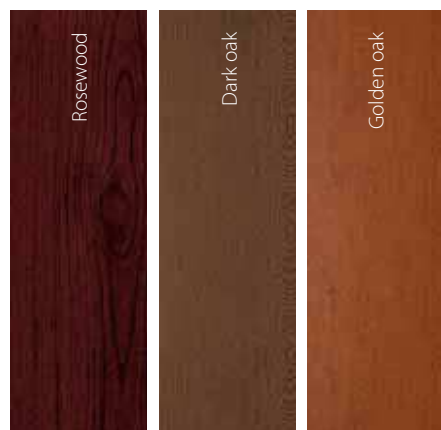
It is possible to finish doors in other **RAL colours**

M-RIBBED PANEL

Wood finish colours

External surface of a panel
Smooth

3 variants:



Woodgrain effect doors provide a realistic alternative to wood that will compliment your home. Its exclusive finish will look as good in the future as it will now.



Internal finish of the panel is
textured

Standard colour
 White-and -grey (close to **RAL 9002**)

It is possible to finish doors in
 other **RAL colours**

L-RIBBED PANELS

The wide horizontal rib of **L-ribbed panels** will emphasise the individual style of your house and give it a special charm

SECTIONAL GARAGE DOORS FROM **L-RIBBED** PANELS

Trend without wicket
Maximum door dimensions:
6000 × 3000 mm

External surface texture of a panel
Woodgrain or Smooth

Door leaf made from
L-ribbed panels

14 standard colours are closest match to the RAL colour stated



It is possible to finish doors in other **RAL colours**

L-RIBBED PANEL

Wood finish colours

External surface of a panel
Smooth

3 variants



Woodgrain effect doors provide a realistic alternative to wood that will compliment your home. Its exclusive finish will look as good in the future as it will now.



Internal finish of the panel is
textured

Standard colour
White-and -grey (close to **RAL 9002**)

It is possible to finish doors in
other **RAL colours**



Georgian styled panels provide a traditional alternative for a sectional door. Our style is symmetrical enhancing the look of your home.

SECTIONAL GARAGE DOORS WITH **GEORGIAN PANELS**

Trend without wicket
Maximum door dimensions:
5000 x 3000 mm

External surface texture of a panel
Woodgrain

Door leaf made from
Georgian panels

14 standard colours are closest match to the RAL colour stated



It is possible to finish doors in other **RAL colours**

Panels with **Georgian design** Wood finish colours

External surface of a panel
Woodgrain

2 variants



Woodgrain effect doors provide a realistic alternative to wood that will compliment your home. Its exclusive finish will look as good in the future as it will now.



Internal finish of the panel is
textured

Standard colour
White-and -grey (close to **RAL 9002**)

It is possible to finish doors in
other **RAL colours**

MICRO- WAVE PANEL

Elegant **microwaves** on the surface of the door leaf emphasise the modern architecture of new buildings. This design helps to hide minor damage to the paint-and-lacquer coating ensuring your doors remain attractive for a long time

SECTIONAL GARAGE DOORS MADE FROM **MICROWAVE** PANELS

Trend without wicket
Maximum door dimensions:
6000 × 3000 mm

Trend with wicket
Maximum door dimensions:
6000 × 3000 mm

External surface of a panel
Woodgrain

Door leaf type
microwave

14 standard colours are closest match to the RAL colour stated



It is possible to finish doors in other **RAL colours**



Texture **Woodgrain**



Internal finish of the panel is
textured

Standard colour
White-and -grey (close to **RAL 9002**)

It is possible to finish doors in
other **RAL colours**

WICKET DOOR



Built in wicket doors are a practical and convenient solution. It allows you to enter into the garage without opening the garage door, saving time and effort.

CONVENIENCE IN DETAIL

- Linear door closer
- Inbuilt sensor determines wicket position
- Rain visor
- Metal handles
- Special catching mechanism to stop the door sagging

Wicket is available built into garage doors series Trend with **microwave** panels and **S-ribbed** panels



STANDARD THRESHOLD, 145 mm

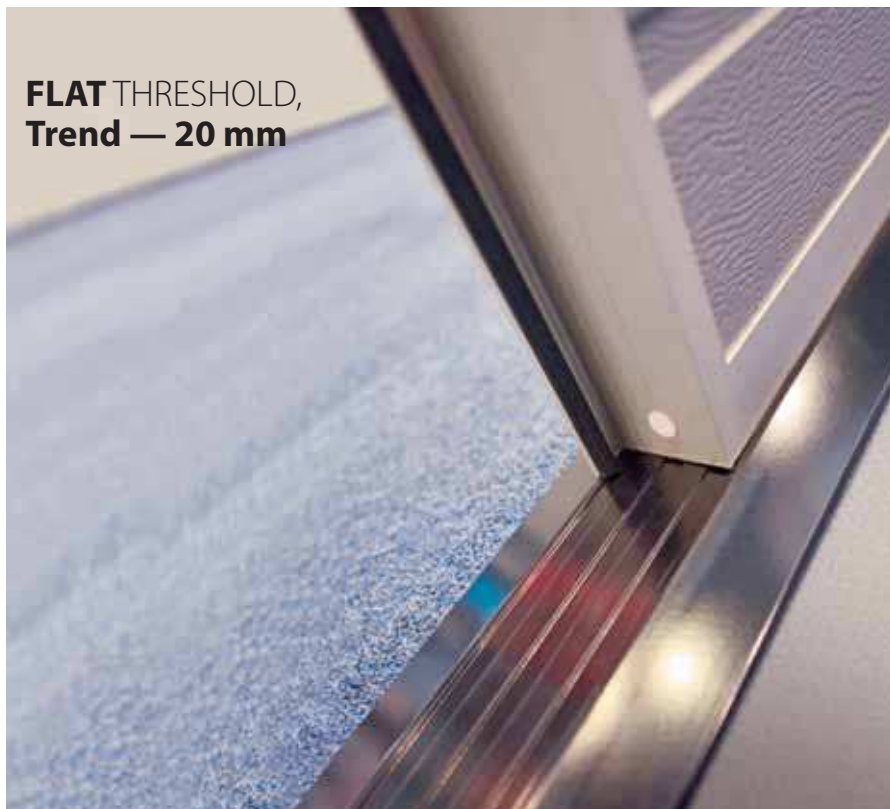
For doors more than **4500 × 3000** mm
Wicket with standard threshold has a reinforced construction.
Designed for larger doors it is mounted into the doors with maximum dimensions.
Maximum dimensions of doors with wicket are **6000 × 3000** mm

LOW THRESHOLD, 100 mm

For doors less than **4500 × 3000** mm
Wicket with low threshold conforms to requirements of fire safety.
It can be installed where an emergency exit is required.

Wicket threshold is only 18-20 mm.
Due to its shape such a threshold ensures maximum convenience in the process of operation. Flat threshold provides unhampered passing for bicycles and carts through the wicket. Maximum dimensions of doors with wicket are 5000 × 3000 mm

FLAT THRESHOLD, Trend — 20 mm



STANDARD COLOURS FOR FRAME OF WICKET DOOR

Colour of wicket handle matches the colour of wicket frame



Brown
(powder coating, colour close to **RAL 8019**)



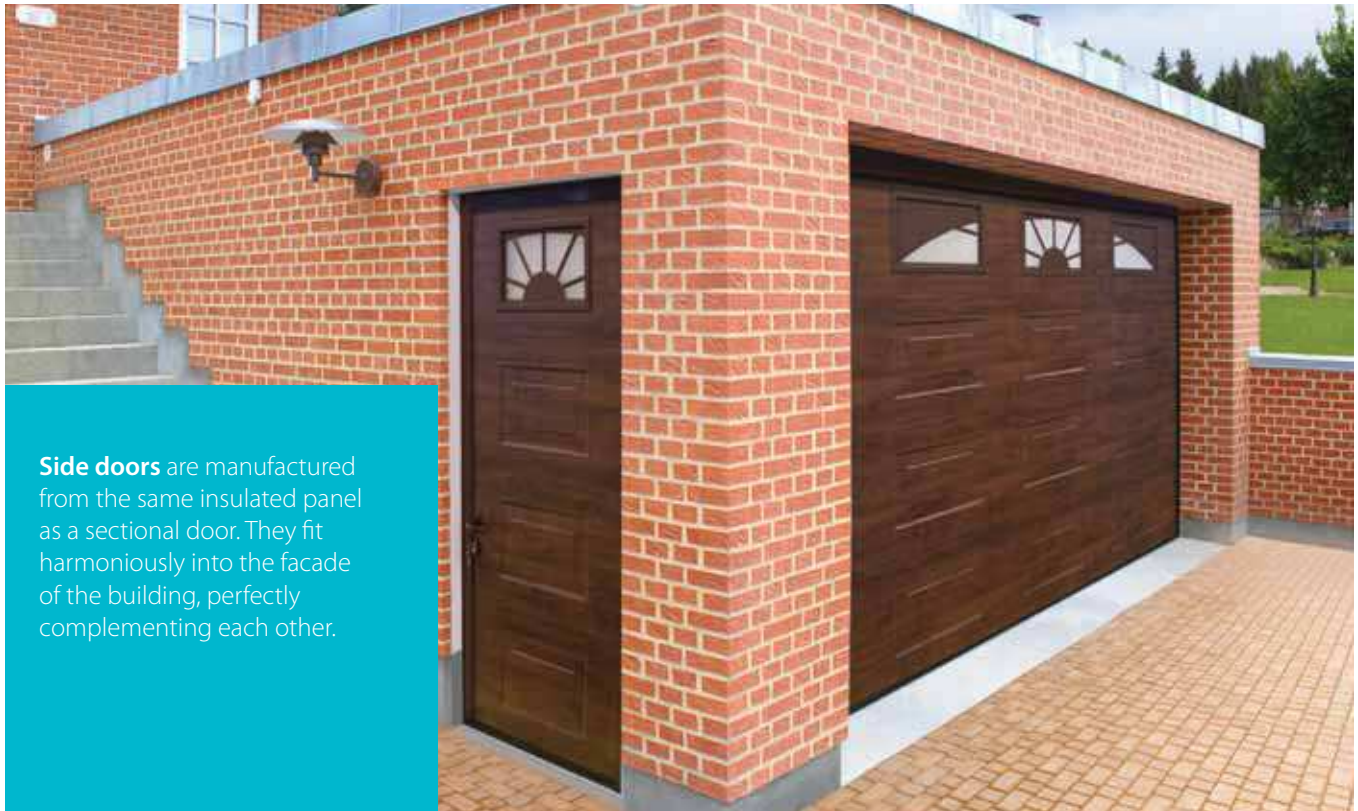
Silver aluminium
(anodized coating, colour **A00-D6**)

other non standard colours are available on request



It is possible to paint the wicket profiles in other colours according to RAL catalogue

SIDE DOOR FROM SECTIONAL DOOR PANELS



The external frame of the side door is manufactured from extruded aluminium and can be finished in the same colour as the door leaf.

Side doors can be installed to open to left or right and open to the inside or outside of the garage

Doors can be mounted as in between the brickwork opening or to the inside face to suit the customers specification

EPDM polyurethane sealing inserts are located along the door perimeter to ensure a reliable seal to the opening.

VARIANTS OF DESIGN



Side doors made to match your sectional door are available in both **Trend**

Standard colour of side door profiles — silver metallic (close to **RAL 9006**)
white (close to **RAL 9016**)
grey-brown (close to **RAL 8019**)

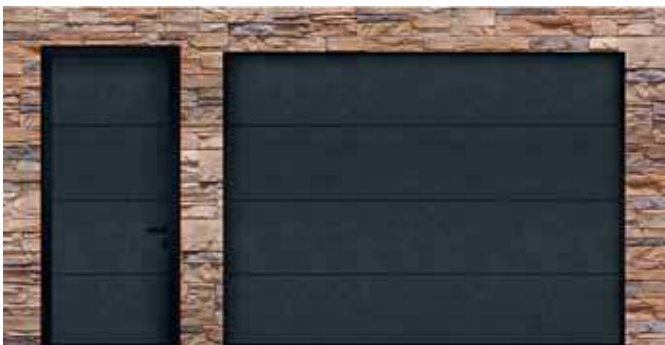
It is possible to paint the side door profiles in other colours according to RAL catalogue



14 standard colours close to **RAL**
3 wood finish colours



M-ribbed



14 standard colours close to **RAL**
3 wood finish colours



L-ribbed



14 standard colours close to **RAL**
2 wood finish colours



Georgian



10 standard colours close to **RAL**

Microwave

ACCESSORIES

WINDOWS

Glazing for garage doors provide natural light and saves energy. They also contribute to the aesthetics of the door.

Windows are available in **Trend** doors, to suit any panel design you choose.

- Microwave
- S-ribbed panels
- M-ribbed panels
- L-ribbed panels
- Georgian panels

Frame and decorative inserts
Cross and **Sunrise** — plastic

Colour of external frame and inserts —
white and **brown**

If a coloured door is ordered the window surround and inserts are finished to the same colour as the door.



EXTERNAL RELEASE FOR ELECTRIC DOORS

Where there is no other access into the garage, we offer an external manual release to allow the door to be opened in the event of a power failure.

Classical rectangular window



Decorative glazing **Cross**



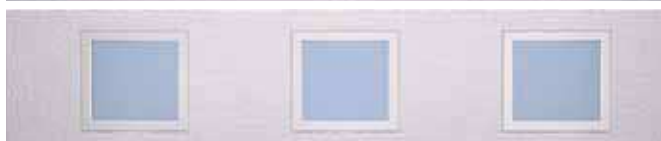
Decorative glazing **Sunrise**



Classical round window

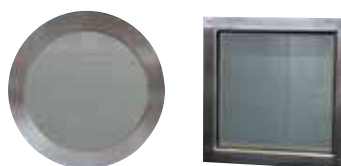


Classical square window



LOCK

For manually operated doors, you can choose a colour coordinated high security locking device. Key operated from the outside, your lock can be positioned in either the middle, left or right hand side of the door.



STAINLESS STEEL WINDOWS

A choice of round or square windows with stainless steel frames are available for the contemporary design

INBETWEEN BRICKWORK INSTALLATION

Unlimited options for mounting garage doors

Set for reveal fit:

- set of side and top decorative profiles
- set of brackets for fixing the track system to the wall

Reveal fit is used for the following doors:

- **Trend** with tension springs
- **Trend** with low headroom, rear spring kit

Opening parameters:

Trend

- sideroom
from 0 to 100 mm
- headroom above door
from 0 to 145 mm

Special option “**Reveal fit**” is offered for installation of sectional doors in non-standard openings of the “tunnel” type, openings without top headroom or side room.

Reveal fit is often used when replacing old up and over doors with sectional ones. Additional work to reconstruct the opening is not required.

REVEAL FIT

Reveal fit frame can be painted to match the colour of the door, alternatively it could be in a contrasting colour.

The reveal kit offers an alternative to installation on a wooden frame if there is insufficient side room to mount on the inside of the garage opening

COMFORT

MODERN TECHNOLOGIES

for comfortable and safe operation



Additional elements — remote controls, photo cells, proximity cards and many others — will help to extend the options for door operation and improve safety and functional efficiency of the whole system.

GUNTHER/ALUTECH automated garage doors equipped with remote control are easily and efficiently operated directly from your car. It is particularly convenient in bad weather — when it rains or snows. All you need to do is to press a button on a remote control and the doors will open.

AND SAFE OPERATION



SPEED AND CONTEMPORARY DESIGN

Our garage door drive systems are manufactured to be quiet, smooth running and secure working in harmony with the Alutech garage door.

- Special motors designed for GUNTHER/ALUTECH.
- An innovative high-speed function ensures that these door openers are 50% faster than openers supplied by other manufacturers.
- Energy efficiency decreases energy consumption to minimum.
- An integrated LED system provides bright, modern lighting
- The patented power limitation feature and dual anti-burglary system provide optimum protection.
- The door openers can be programmed entirely intuitively using the LC display.
- A wide range of programmed opener functions ensures safety and comfort during garage door operation.
- 7 year comprehensive warranty.
- Fully CE compliant.
- Full range of accessories available.

Unique technology. For safety and comfort.

Delivery Set included as standard

- 800 nm electric operator 433 Mhz remote control unit
- 4 channel remote control mini hand transmitters
- Universal installation kit for sectional doors
- Belt driven operator rail for quiet operation

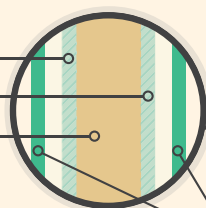
Options

- Additional hand transmitters
- Wireless wall mounted transmitter
- Battery back up in case of power failure
- Wireless external numerical key pad

1 THERMAL INSULATION

SANDWICH PANEL

- External steel sheet
- Internal steel sheet
- Foamed polyurethane



ALUTECH/GUNTHER sandwich panels are 40mm thick.

THERMAL INSULATION OF ALUTECH/GUNTHER DOORS PANEL CORRESPONDS TO THE FOLLOWING MATERIALS

40 mm = 550 mm



Series Trend



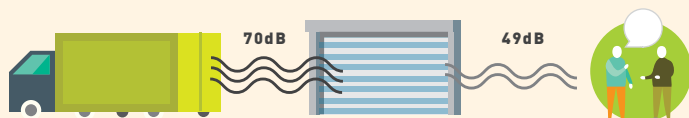
Wall made from bricks

THERMAL TRANSMITTANCE OF ALUTECH/GUNTHER DOORS

Trend Series $U = 1,35 \text{ W}/(\text{m}^2\text{K})$

based on tests conducted at the Rosenheim Institute

2 SOUND INSULATION



3 RELIABLE COATING

RESISTANCE TO CORROSION

Zinc coating 16 microns thick and double layer polyurethane coating (25-35 microns) on the panel outer surface which is modified with polyamide particles (PUR-PA) which protects the sandwich panels from scratches and abrasions caused by mechanical action and the effects of rain and coastal conditions.



Door panels and components have been confirmed in tests as being suitable for use in coastal conditions for up to 15 years.

ALUTECH/GUNTHER SE

7 MAIN ADV



4 COM

DURABILITY

25 000

open/close cycles



which is equal to

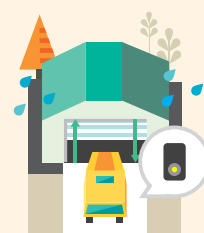
17 YEARS

of operation with 4 open/close cycles per day

AUTOMATIC



Doors open in around 15 seconds



IT IS KNOWN

The number of rainy days Thus you will get wet 195

FUNCTIONAL GARAGE DOORS

VANTAGES



FORT

OPERATION



Operate your door without leaving the car



in Britain is 195. times less.

VERTICAL OPENING



Saving space in front of the garage



Don't have to clear snow in front of the garage

5 RESISTANCE TO WIND LOADS

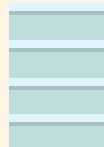
Doors withstand wind speed up to 120 km/h



6 EXCELLENT DESIGN

DIFFERENT PANEL PATTERNS

To suit all decorative styles



S

ribbed panel



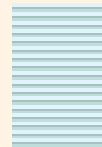
M

ribbed panel



L

ribbed panel



microwave



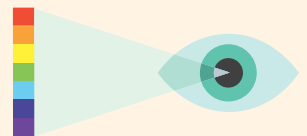
georgian

COLOUR RANGE

14 standard colours



Can be finished in all RAL colours (232 colours)



Wood finish colours



Dark oak



Golden oak



Rosewood

Learn more about different types of panels and colours



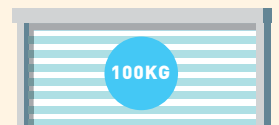
7 SAFETY

Correspond to European standards EN 12604 and EN 12453

PROTECTION AGAINST DOOR LEAF FALLING

1 m² of door leaf weighs approximately 15 kg. Weight of medium size door of Trend Series (7 m²) — is more than 100 kg.

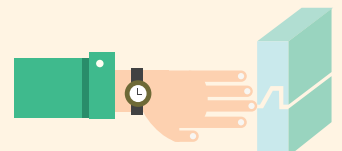
The door leaf is safely balanced with springs that do not move independently. A special device protects against spring break and the door leaf falling.



DOOR STOPS IF IT MEETS AN OBSTRUCTION



PROTECTING AGAINST FINGER TRAPPING



Sandwich panel design protects against finger trapping



Alutech Door systems



AluminTechno



Alutech Incorporated



Günther Tore Systems GMBH, Germany

The Alutech Group of Companies is one of the leaders in the production of roller shutter systems and sectional doors systems in Western and Eastern Europe, and a leading manufacturer of aluminum profile systems in the CIS countries. The group has 5 manufacturing sites, in Germany and Belarus, with sales companies covering many parts of the world.

All sites are equipped with the most up to date, high tech equipment, that include automated painting lines, high quality slitting plants for aluminium and steel coil, modern efficient line for manufacturing sandwich panels for sectional doors, rollforming lines for insulated roller door lath, lines for extruded aluminium profiles, automated complex for die casting aluminium components and modern lines for powder coating, one of the biggest lines for anodizing in CIS countries.

High-tech equipment and our own manufacturing plants allows the specialists in Alutech to control the quality of production in every stage of the manufacturing process : from procurement of raw materials to manufacturing the finished product and its packaging. The quality management system in all group companies meets the requirements of ISO 9001 International standard in TUV CERT system, which is confirmed by the corresponding certificates.

Alutech Group of Companies are actively expanding, in both its markets and products. Alutech Sectional doors are manufactured both in Germany and Belarus, with capacity of over 250,000 sectional doors each year, our main markets are Germany, UK, France, Austria, Holland and most other Eastern and Western European countries.

Alutech Sectional doors perfectly combine comfort, security and safety to provide quality and style to compliment your home.